

## UPDATE ON MANI

### BENEFITS TO OUR MEMBERS

We have come a long way since 2009 when the MGS Data Project Phase I and II were started. Our aim was to locate and organize the MGS documents. About 30,000 digital files plus thousands of sheets of paper were reviewed. This project has evolved into MANI

We have now uploaded indexes to over **1,000,000** record items. In its latest form MANI has a new graphic look to match our MGS website, but the changes go much deeper. In the fall, our volunteers had uploaded more records than in the first nine months of 2016. We are growing!

### SEARCH THEN SEARCH AGAIN

If you have run unsuccessful searches in MANI before, run them again to see if you are now successful. You will also benefit from running them again in the future as we continue to grow. Remember keep track of what you search for!

The records in MANI for the most part are only available in MANI. There are 70 plus indexes held in the MGS Resource Centre and all will eventually be in MANI. These are indexes created by MGS volunteers over the last 40 plus years.

Our members work weekly to expand these indexes. MANI allows the searching of indexes in a single search. This originally had to be multiple searches in separate indexes. Some were digital but most were paper based and housed throughout the MGS Library. MANI is an ongoing project and will grow to include indexes from other books and publications as they are identified and indexed by volunteers. MANI will soon reach 1.5 million records.

*I am finding MANI exceptionally useful! It occupies a permanently-open tab in my browser*  
[MGS member Gordon Goldsborough]

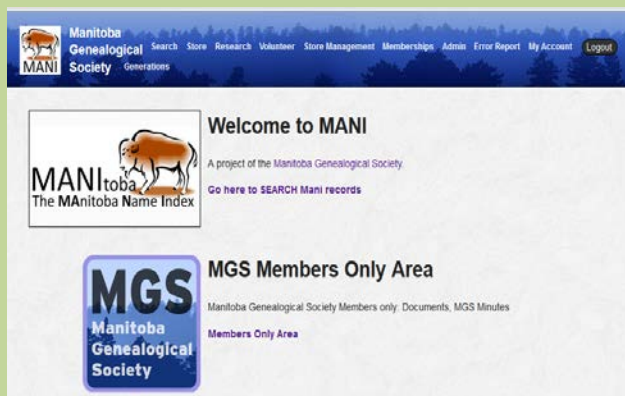
### ALL MGS MEMBERS CAN REGISTER TO USE MANI (MANITOBA NAMES INDEX)

MANI includes:

- Indexes for the almost 1400 cemetery transcribed created by MGS
- Indexes for Obituaries from both rural and Winnipeg newspapers
- An index of the MGS journal "Generations" along with a digitized repository of all issues of Generations
- Indexes of BMDs (births, marriages, deaths) from publications and newspapers
- MGS indexes created from local history books published without an index
- Indexes to miscellaneous publications of interest to genealogists

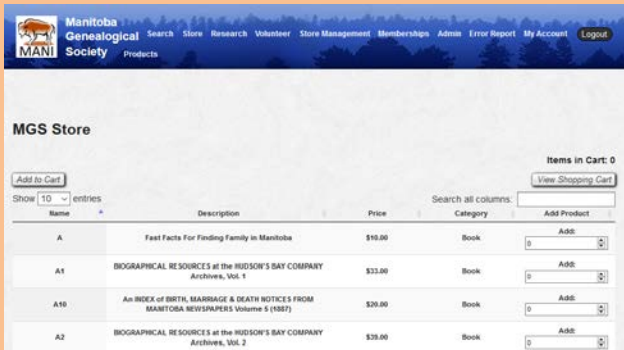
To use MANI, you must be an Individual or associate member and register on MANI.

Members can also use MANI to pay for MGS memberships or renewals online.

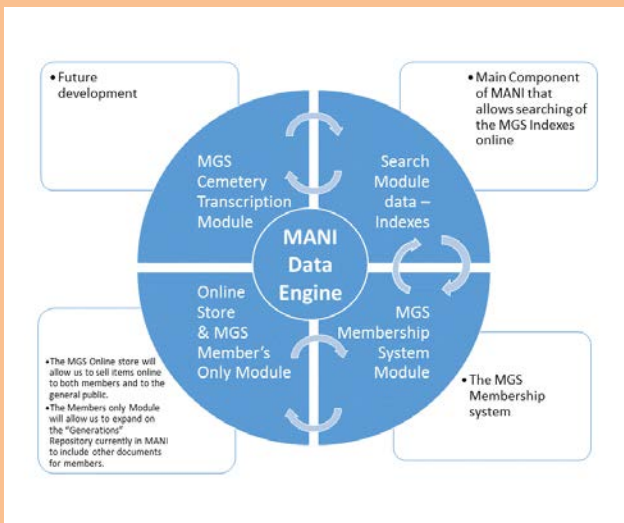


## MEMBERS ONLY AREA

The online database that we call MANI is really our MGS Members Only area. We will soon be adding access to MGS files and documents of interest to our members on MANI. We are about to launch our Research Request section on our MGS website so outsiders can place Research Requests to be done by our Volunteer research team. At the same time we will be launching our e-Store.



This will not only allow members to order our publications in either print or electronic form for downloading, but will link to our new Cemetery Transcription module to be added over the winter of 2017.



MANI already houses and supplies the data engine and host for our MGS Membership module. Individuals can use MANI to join MGS and pay online. Members can use MANI to pay their annual membership renewal and starting soon automated membership expiring reminder emails will be going out from MANI.

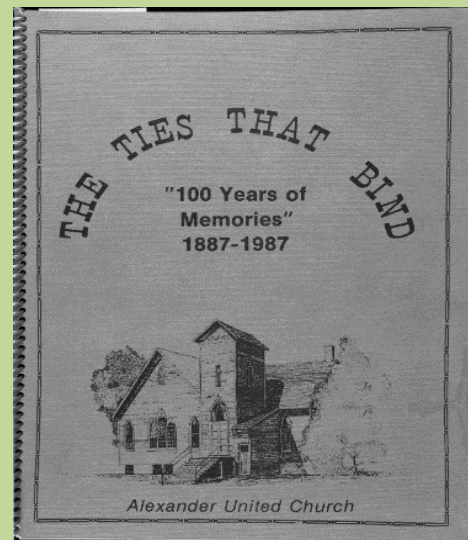
## ACCESS TO YOUR MANI

If your membership expires your access to the MANI search database will be blocked but you can still access your account and pay for a membership renewal. As soon as a membership is paid through PayPal the full account is activated.

Your membership account also lets you update your personal information like a change of name, address or email.

## A VERY USEFUL SEARCH RESOURCE

With over a million index items and growing MANI has become a very useful search resource for Manitoba information. It is available to you wherever you are as long as you have internet access.



## NOT JUST AN INDEX

We are working on agreements for linking to pdf copies of some of the actual records or books. This will allow you to look at the actual document or publication which the index refers to. This will be similar to our "Generations" pdf archives already in MANI.

## A GLIMPSE INTO THE FUTURE - WHAT IS PLANNED FOR 2017?

Updating and expanding the records of Manitoba cemeteries has been an important project of MGS for many years. The proposed CT (Cemetery Transcription) Project is to create a module in MANI which will enable a distributive workflow to process and store the Cemetery Transcriptions in MANI. The Indexes in MANI will be automatically updated from any changes made to the Cemetery Transcriptions.

All of the required software and files will be housed on our server (MANI) and be accessible online. The current documents will be digitized and stored in the MANI database.

A CT Tool will be developed to allow our volunteers to work from wherever they need to, with or without internet access, to update, proof and edit the CT data. It can then be transferred into MANI. This will allow us to update our cemeteries, some of which were last read in the 1970s.

The CT Module will provide the management tools required to maintain and update the Cemetery Transcriptions. It will allow the latest information to be formatted and published on demand to either print or electronic PDF download format. The individual Cemetery Transcription pages will be available in PDF format for delivery in MANI using the PPV (pay-per-view) scheme. When a MANI user finds an entry they are interested in they can purchase the page that the entry appears on or the one before or after it. They pay for the page (ppv) instead of having to purchase the complete Cemetery Transcription. The MANI users will also have a link to purchase and download the complete Cemetery Transcription. A final option will be to have the MGS print and mail the CT at an additional cost.



At the request of our Southwest Branch the module will include a PPV (Pay-per-View) photograph utility. Individual photos of graves can be linked to the CT index records. Income from the PPV would be split between MANI and the Branch. This would offset the extra cost of storing the photographs as well as provide income for the branches.

As we start 2017, we wanted to look back on 2016, the first full calendar year of MANI. Since launching MANI version 1.0 in the spring of 2015, the use of MANI has expanded. MGS now has 60 % of MGS individual and associate member with accounts set-up with MANI.

We continue to add additional records to MANI. This includes existing MGS created indexes to local histories, family histories and other publications, as well as new material being indexed currently by MGS Volunteers. Two major Volunteer projects that will continue to add to the count are the editing and upgrading of cemetery Transcriptions as well as the Winnipeg and Rural newspapers obituaries. The Winnipeg obit collection has been modified to add information on burial location when mentioned in the Obit. At the same time all files are being edited and checked for errors and compliance with MANI standards.

# GENERATIONS

Manitoba Genealogical Society Inc.

Volume 41 Number 3 September 2016  
Canadian Publications Agreement #4020442 ISSN 0226-6105

## Tribute to Past Members of the North West Mounted Police



Thomas Henry Waring

Corporal James Black Bowers,  
kneeling, far left

William Henry Lowe,  
far right



North West Mounted Police Troop

contact@mtbgenalogy.com

www.mtbgenalogy.com

## “GENERATIONS” REPOSITORY

Another large project completed is the digitization of all of the back issues of the MGS magazine “Generations”. These pdf copies are available to all MGS members who have activated their MANI accounts. The ones from 1976 to 2010 have an index to all names mentioned in them included in the MANI database. If you find a citation in your search results you can download the issue and read the article.

## GRANTS AND THE MGS CAPITAL CAMPAIGN

The MGS Technology Infrastructure has benefited by your donations to the MGS Capital Campaign as well as grants we have applied for and received. Grants from the Winnipeg Foundation as well as the Manitoba Government - Heritage Grants, have covered the MANI development costs in the past.

We also secured grants from them for our next phase to cover the cost of developing the Cemetery Transcription module. Ongoing costs of the MANI Project are covered by the Capital Campaign but we will continue to apply for grants in order to stretch this fund as far as possible.

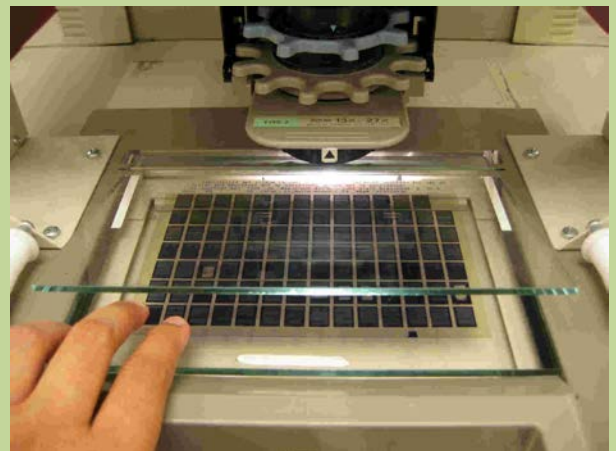


## SPOTLIGHT ON A COLLECTION – FLO COX SCRAPBOOKS

One of the original aims when we started the MGS data project in 2009 was to make the MGS resources more readily available to MGS members. MANI was the vehicle that was created to provide this service to members.

What makes MANI work are the many collections indexed by past and present MGS volunteers. One of these often overlooked collections created by volunteers is the index to the **Scrapbook collection of Florence Cox, 1945-1985**. The Scrapbooks themselves were microfilmed by MGS in 1988 as 65 sheets of microfiche. To make them more accessible MGS Volunteers indexed them. This collection was probably underused. They are now searched as part of your MANI search.

The scrapbook index includes 37,932 entries.



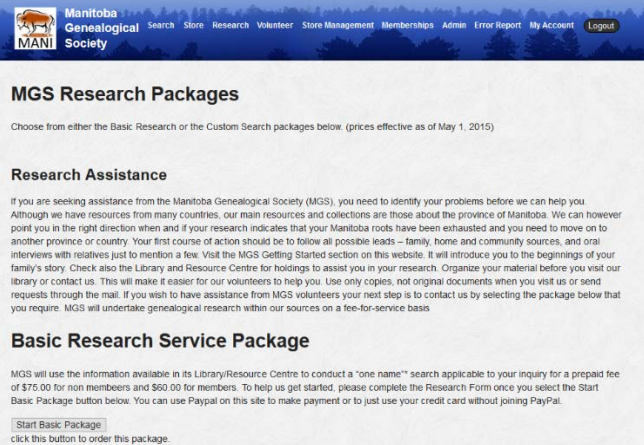
Bringing to light the valuable work of our Volunteers by updating the content into the digital age is important. In a future project, we hope to scan these microfiche and make the pages available on MANI.

## MANI 2017

Over the fall season we worked on fixing some of the bugs discovered in MANI. Once fixed we will be activating some of these new features to MANI. These features had issues and were not ready to launch at the end of the previous Winter Term.

We hope to introduce:

1. The MGS Online store.
2. The Online Research Services request and tracking module
3. The store and purchase of research services will be accessible to non-members from our website.
4. A Pay-per-view system to provide PDF copies of Cemetery Transcription pages.
5. A Cemetery Transcription Module to store, update and publish this important MGS collection.
6. A process for scanning, editing, loading and proofing of Cemetery Transcriptions into the CT Module
7. We need to organize cemetery rereading by volunteers and possibly summer students to update our information
8. Negotiate where MGS currently has digital copies of indexes but requires permission from outside agencies to move them to MANI.
9. Create a scheme for unique and limited access to MANI for outside groups. This can be used as an inducement to possible partners where they can access their content online. We are currently using this to provide the MGS Branches with membership information
10. Expand our MANI indexes to include other Manitoba resources that could be indexed by MGS volunteers as well as acquire permission to include copyright indexes that already exist elsewhere.



The screenshot shows the 'MGS Research Packages' page on the Manitoba Genealogical Society website. The page has a blue header with navigation links: Search, Store, Research, Volunteer, Store Management, Memberships, Admin, Error Report, My Account, and Logout. The main content area is white with a light blue background. It features a section for 'Research Assistance' with a paragraph of text and a 'Basic Research Service Package' section with a 'Start Basic Package' button and a note to click the button to order the package.

11. Work corporately with other heritage organizations to digitize their data and include it in MANI

## MGS GOALS

The “MGS Strategic Plan 2012-2015” identified the need to upgrade our IT and computing resources. It recommended a major investment in “web based resources”. The survey of membership conducted as part of the Strategic Planning process identified internet access as critical to long term success of the MGS. The plan set three goals

1. Have 100% of our index data available online
2. Be the ‘go to’ site for genealogy in Manitoba
3. Develop a new web interface to make online data access possible.

As we enter 2017 we have achieved or are well on our way to completing all of these goals. As we look to the future we plan to expand MANI by both the number of items indexed and type of items available from the site. We are currently developing a new Strategic Plan for MGS to guide us into the future.

Gordon McBean  
Vice President Information Technology  
Manitoba Genealogical Society